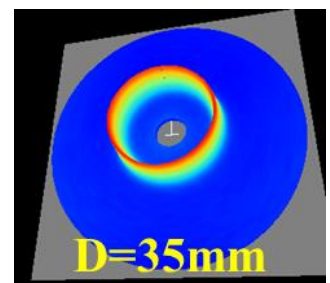
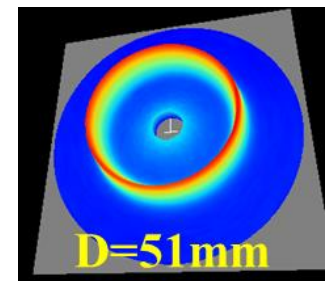
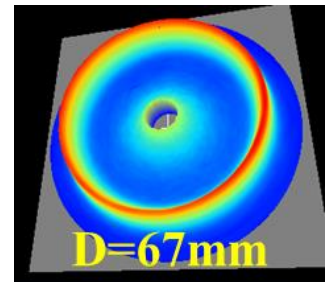
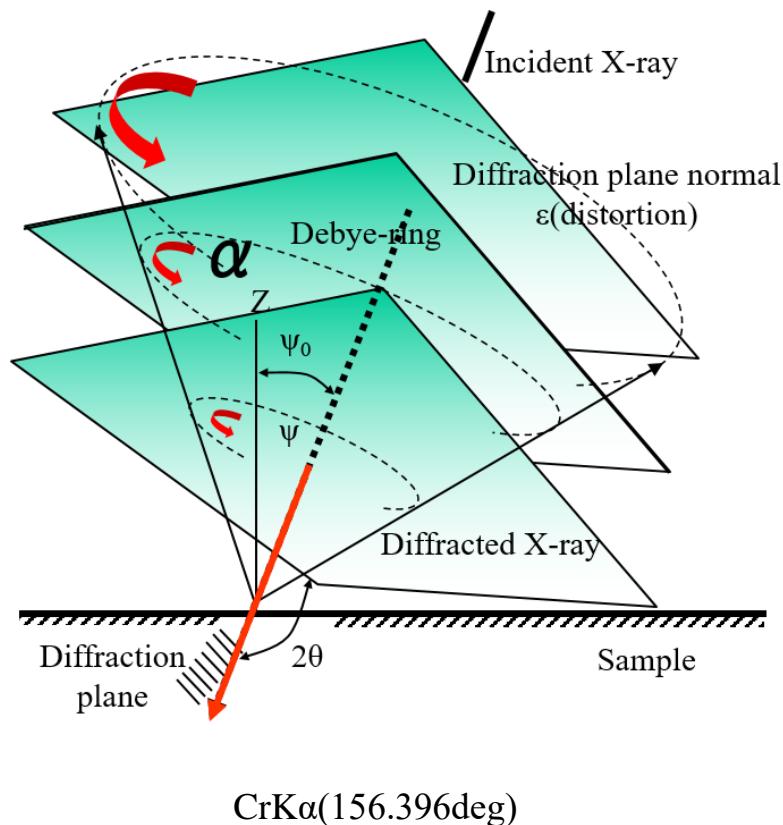


Application Advantage of Full 2D Detection (Sample Distance)

The tolerance of sample distance from the detector is within $\pm 16\text{mm}$ (In case of steel).

Why is the sample setting so easy?

Change of Debye-ring size by difference of sample distance



As Debye-ring's size is changed according to the sample distance, measurement is possible if the Debye-ring is within the 2D detector.