

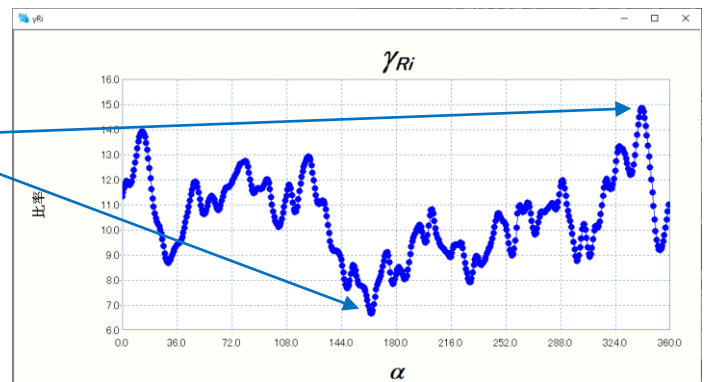
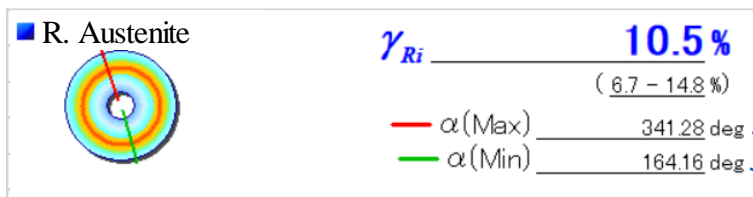
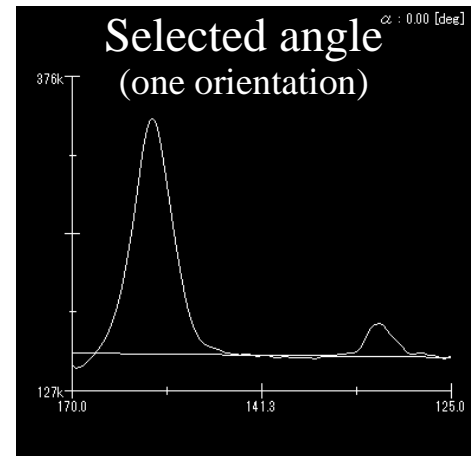
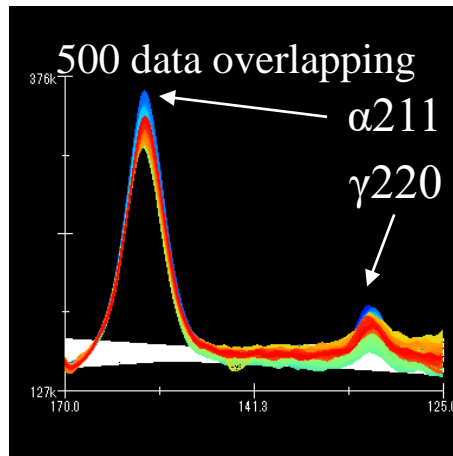
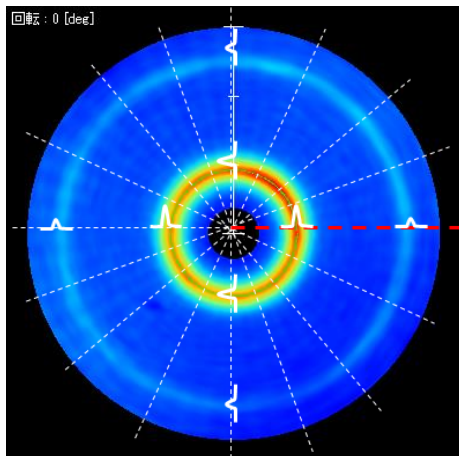
# $\mu$ -X360s

## Retained Austenite Measurement (Optional function)

Measure the percentage of retained austenite not transformed to martensite upon quenching.

Non-contact and non-destructive measurement using the X-ray diffraction technique.

### Measurement result



Results of 500 orientation can output at one measurement!

**High repeatable measurement** by averaging full ring data: 500 results