

μ -X360s Electrochemical Polisher (Optional item)

- ◆ High speed polishing rate:
100 μ m per 3 minutes
- ◆ Possible to select polishing method
depending on working environments.
- ◆ Stable polishing rate
by the current control and digital timer function.

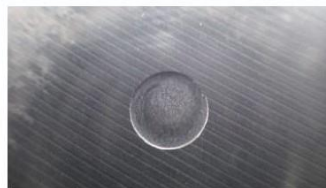


Polishing method

- Wiping method (Wipe from side to side) <Example: SS400 plate>



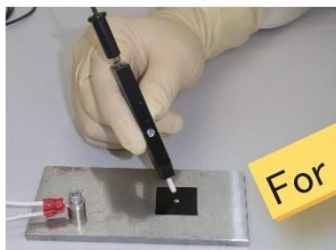
Quicker



Polishing area : ϕ 5mm
Polishing depth: 100 μ m
Polishing time : 150sec

- Narrow type

<Example: Gear tooth face>

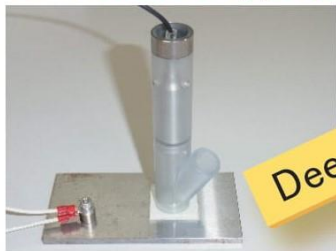


For narrow space



Polishing area : ϕ 2mm
Polishing depth: 30 μ m
Polishing time : 60sec

- Torch stand type (Store the electrolyte) <Example: SS400 plate>



Deeper



Polishing area : ϕ 8mm
Polishing depth: 1mm
Polishing time : 19min