

μ-X360s

Retained Austenite Reference Specimen (Option)

Retained Austenite Reference Specimen for customer's inspection purpose.

For daily check, start-up inspection

For operation error check, instrumental error check

For machine variation check

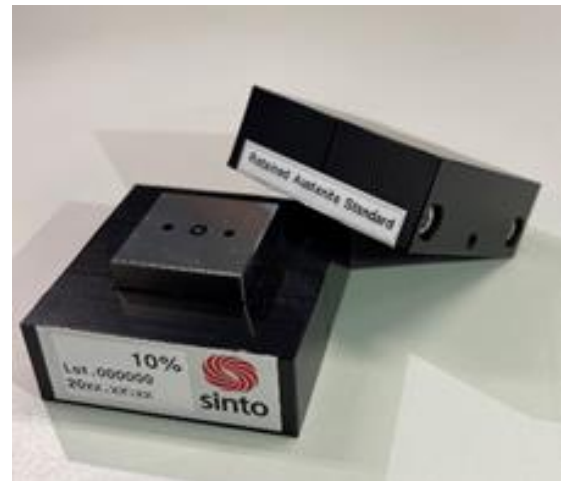
The specimen should be helpful to solve the problem.

Specifications

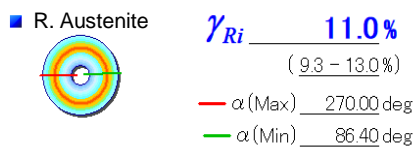
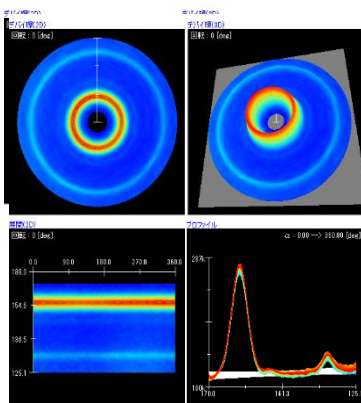
R. Austenite (Approx.)	10% (±3%)
Material	SKD11
Size	W40×D40×H20mm
Measurement area	□20mm
Contains	Retained Austenite Reference Specimen (wrapped with anti-rust paper), Datasheet

* Size may change without notification.

* Please contact us, if you have special request of retained austenite value.

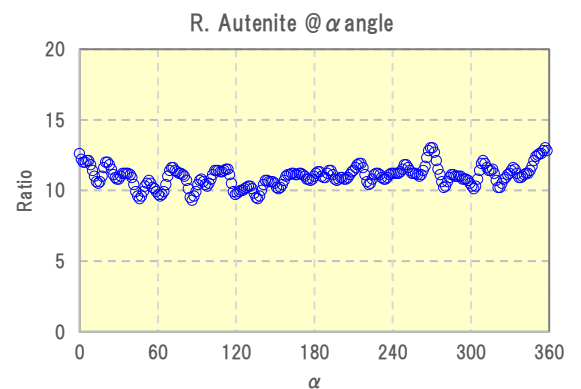


Measurement result with μ-X360s (Example) * by Cr-Kα X-ray



Fe (Martensite) (α 211)

Austenite (γ 220)



7000-35 Nakagawa, Hosoe-cho, Hamana-ku,
Hamamatsu-city, Shizuoka 4311304 JAPAN
TEL+81(0)535223611 FAX +81(0)535223666
E-mail: sales@pulstec.co.jp

PULSTEC

Pulstec Industrial Co., Ltd.

URL: <https://www.pulstec.co.jp/>