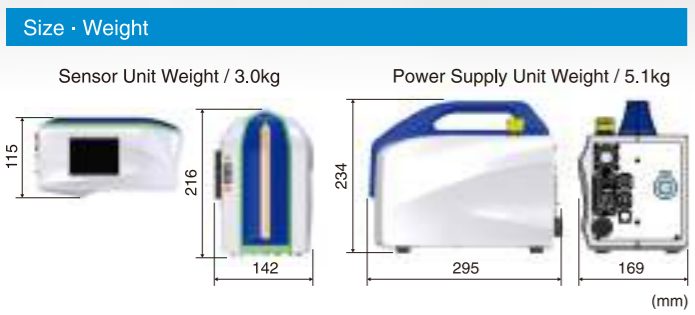


Portable X-ray residual stress analyzer

micro μ -X360J



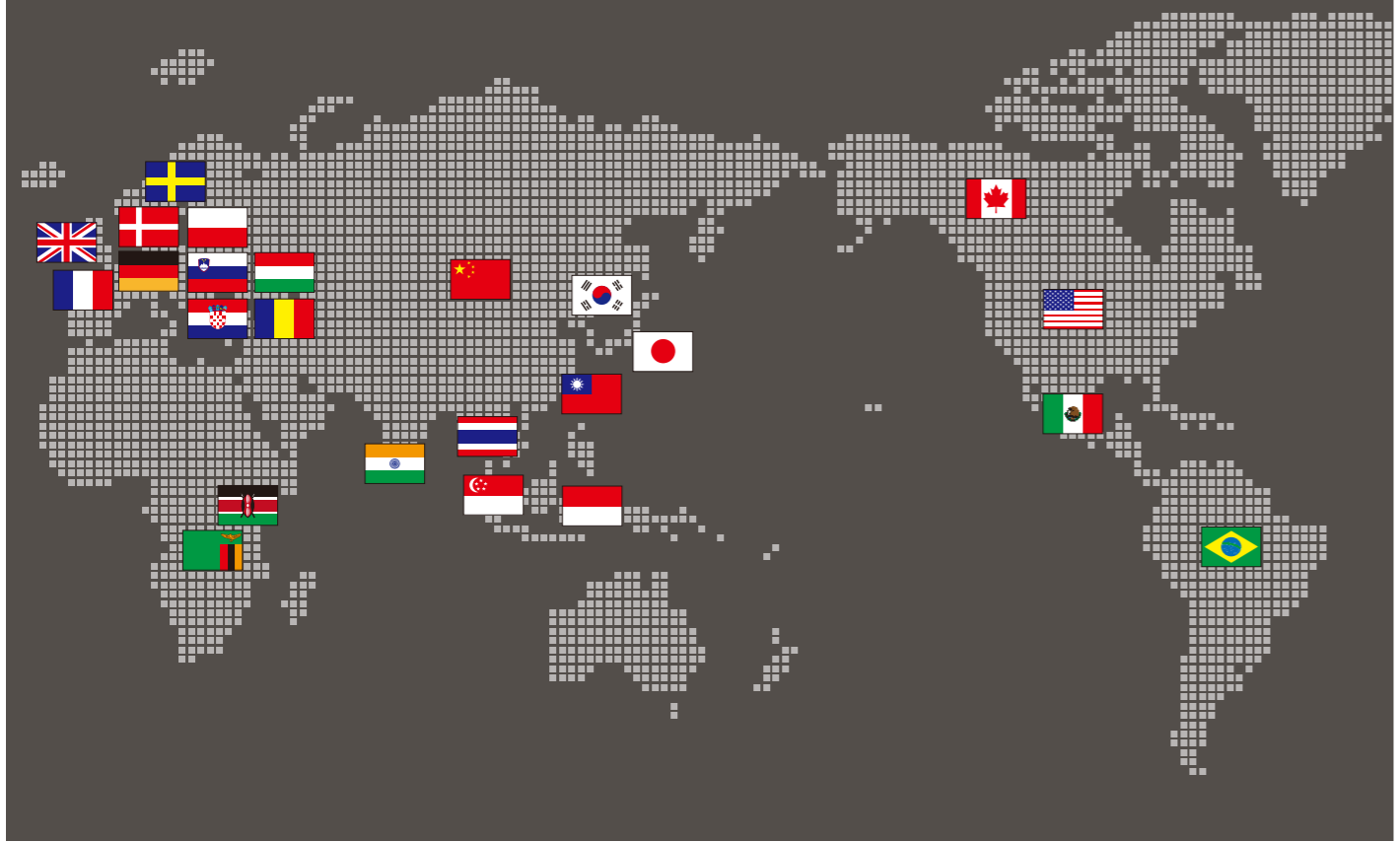
Compact · Lightweight



Specification

Measurement items	Residual stress, FWHM(included with software), Retained austenite(Optional)
Measurement method	cosa method(Single-incident angle method)
Collimator size	Standard: ϕ 1.0mm(Irradiation size Approx. ϕ 2mm)
X-ray tube cooling method	Air cooling
Power	AC100- 240V, 50/60Hz, 130W

Countries Using Pulstec's μ -X360 Series



※The specification in this document may change without prior notice.

PULSTEC PULSTEC INDUSTRIAL CO.,LTD.
Create New Value

7000-35, Nakagawa, Hosoe-cho, Hamana-ku,
Hamamatsu-city, Shizuoka-pref, 431-1304, JAPAN
TEL+81-53-522-3611 FAX+81-53-522-3666
U R L : <https://www.pulstec.co.jp/en/>
E-mail : sales@pulstec.co.jp

MEMO

Easy measurements for anyone, anywhere!

PULSTEC
Create New Value

Features

Safety cabinet with interlock

Size: W800xD600xH600mm



Anyone

The safety cabinet prevents X-ray leakage



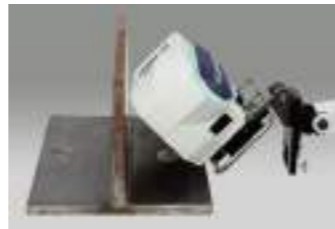
Spring



Crankshaft



Gear



Fillet weld

Anywhere

Non-contact, non-destructive measurement for large structures

Tripod • Flexible arm

Used for on-site measurements
Flexible positioning



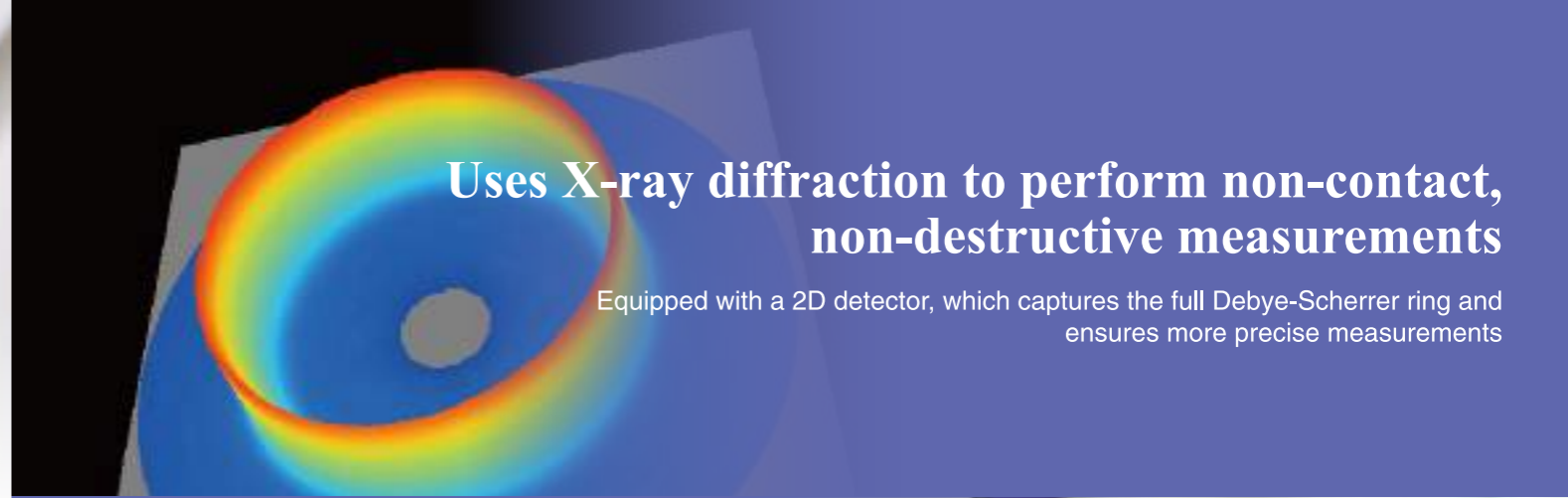
Check the annealing effects of welds in oil tanks



Check the residual stress in a rolled component after heat treatment



Bridge maintenance



Uses X-ray diffraction to perform non-contact, non-destructive measurements

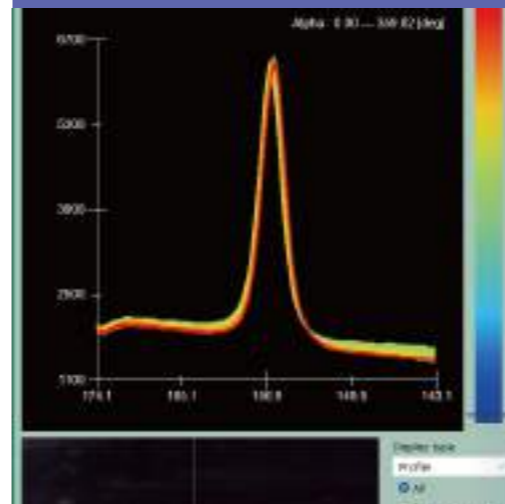
Equipped with a 2D detector, which captures the full Debye-Scherrer ring and ensures more precise measurements

Easy to set up

The μ -X360J features an LCD monitor, allowing you to easily see and adjust your sample



Primary benefits of μ -X360J



■ R. Stress

σ_x -436 MPa

Dev. 5 MPa

τ_{xy}

Measures samples quickly compared to other equipment
Measures ferritic steel samples in ~40 seconds

■ FWHM

Ave. 3.20 deg

Min. 3.15 deg

Lower X-ray power output to ensure operator safety



On-site measurements are possible

Compact, lightweight and highly portable!



Easy-to-use software minimal training needed

Anyone can operate after short training!



STEP.1 Set the sample

Use the integrated angle gauge to adjust the X-ray incident angle
Use the CCD camera display to adjust the sample's position and distance

STEP.2 Start the measurement

X-ray is ON
After a few moments, the results are displayed

STEP.3 Read the results

The software will display residual stress results, the Debye-Scherrer ring, a camera image, and FWHM

Additional benefits & features of μ -X360J

We offer various, optional accessories for different measurement applications

Can select according to your specific application!

X-ray unit for exchange

Pulstec offers various X-ray tubes based on sample material
Available tube options include Cr, V, Mn, Cu, and Co

Collimator

Used to change the X-ray spot size without any special tools

Height adjustment stand for the sensor

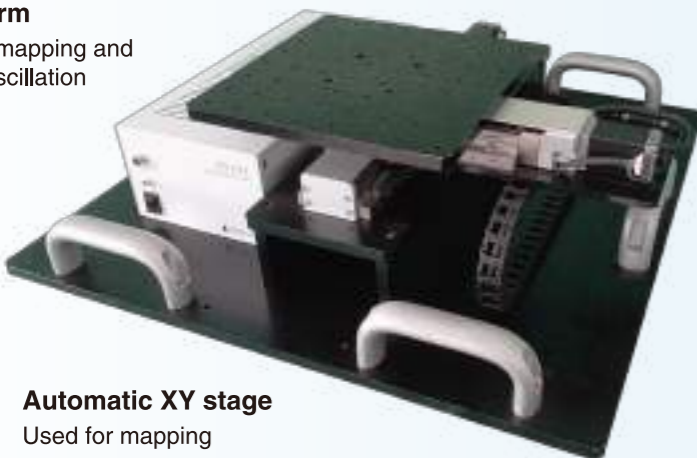
Helps when measuring flat samples continuously

Reference specimens for residual stress & retained austenite

Used for checking measurement accuracy

Robot arm

Used for mapping and tri-axial oscillation



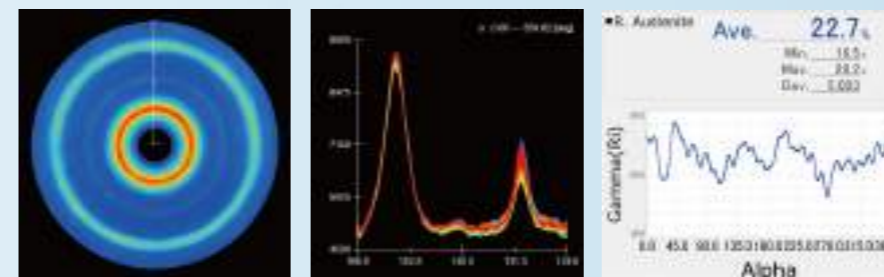
Automatic XY stage

Used for mapping



Electrochemical polisher

Used for layer removal on depth profile measurements



Retained austenite measurement

Optional software function that measures the percentage of retained austenite in the sample



Hand-carry case

This impact-resistant carry-case protects the unit and flexible arm during transport